



# Medallion Technology, LLC.

## TWI-2300 SEMI-AUTOMATIC INSERTION SYSTEM

U.S. PATENT PENDING

The TWI-2300 is a semi-automatic insertion system designed for use with Twisted Wire Interconnects [TWI]. The TWI-2300 is manually loaded with TWI's and the target media such as a PCB or MCM stack. The method of operation is as follows; the operator manually inserts and seats a TWI into the selected via of the target media, the TWI-2300 then performs the final steps of pulling, aligning the TWI and cutting the leader, which is removed automatically. The process repeats as required. The system is a portable bench top unit that can be operated by either foot pedal or a computer.

### SYSTEM

Assembly rate – operator dependant  
Assembled stack thickness up to 2.000"  
TWI product changeover – minutes  
Vision system w/camera & lighting  
Self contained scrap removal system

### SOFTWARE FEATURES

Microsoft Windows® operating system  
Microsoft Visual Basic.NET GUI  
Maintenance diagnostics & tracking

### PHYSICAL

Control unit: 9 ¾" L x 18" W x 6" H  
Weight: 19 lbs.  
Pull/cut tool: Ø 1 ½" x 13 ½" L  
Weight: 1 ½ lbs.  
Assembly fixture: 24" L x 17 ¾" x 8" H  
Weight: 31 lbs.  
Power: 120V/60Hz/single phase/3Amp  
Pressure: 80 PSI CDA/Nitrogen  
Environment: cleanroom class >10,000  
Noise level: <60dB  
Installation: portable – bench top

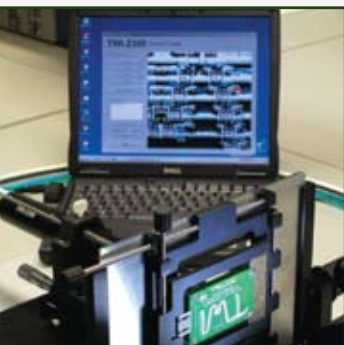
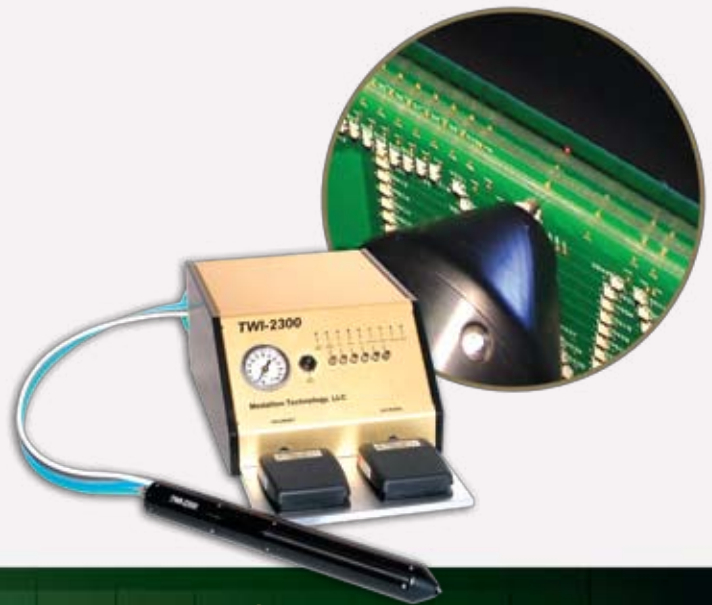
### OPTIONS

PCB/MCM assembly fixture  
TWI component cartridges  
Customizations per application  
Application hardware – .005/.010/.015

### TWI COMPONENT RANGE

Size	0.005	0.010	0.015
Bulge Ø	0.010	0.020	0.030
Bulge length	0.025	0.050	0.075
Via Ø*	0.008	0.018	0.028
Max. length	2.000	2.000	2.000

\*Note: "Via Ø" is the finished plated through-hole recommended by MTLCC



Medallion Technology, LLC.

10000 Manchester Street, Suite M | Houston, TX 77012  
Tel: 713-921-6900 | Fax: 713-921-5757 | www.medalliontech.com

